

STATE	REFERENCE PROJECT NO	FISCAL YEAR	SHEET NO	LAST SHEET NO
AL	SCP 59-952-24	2026	1	4A

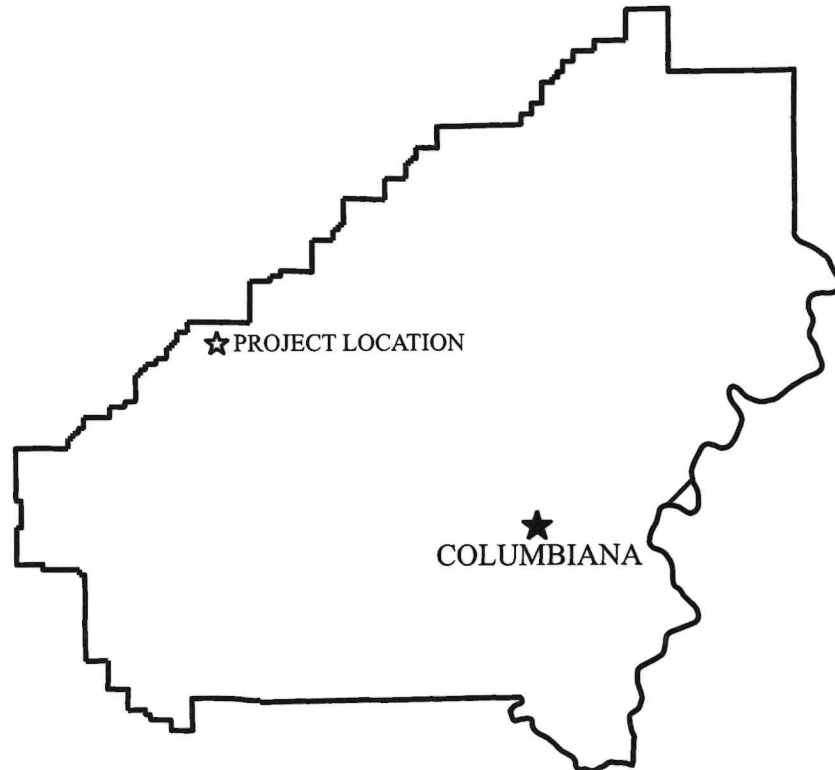
# SHELBY COUNTY HIGHWAY DEPARTMENT

## PLANS OF PROPOSED PROJECT SCP 59-952-24

COUNTY ROAD 52 CAHABA RIVER BRIDGE DECK SEAL  
IN HELENA, AL



STATE LOCATOR



COUNTY ENGINEER  
DAVID WILLINGHAM, P.E.



### COUNTY COMMISSIONERS

DISTRICT #1 KEVIN MORRIS	DISTRICT #2 TOMMY EDWARDS
DISTRICT #3 JON PARKER	DISTRICT #4 WARD WILLIAMS
DISTRICT #5 ELWYN BEARDEN	DISTRICT #6 JOSH SISK
DISTRICT #7 LINDSEY ALLISON	DISTRICT #8 RICK SHEPHERD
DISTRICT #9 DR. ROBBIE HAYES	

NOTE : THESE PLANS HAVE BEEN PREPARED TO  
CONFORM WITH ALABAMA DEPARTMENT  
OF TRANSPORTATION STANDARD  
SPECIFICATIONS DATED 2026.

REFERENCE PROJECT NO

FISCAL YEAR

SHEET NO

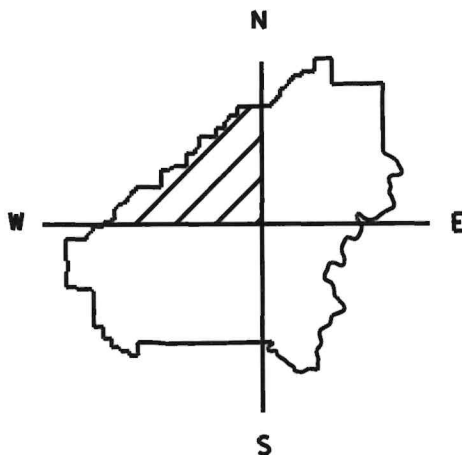
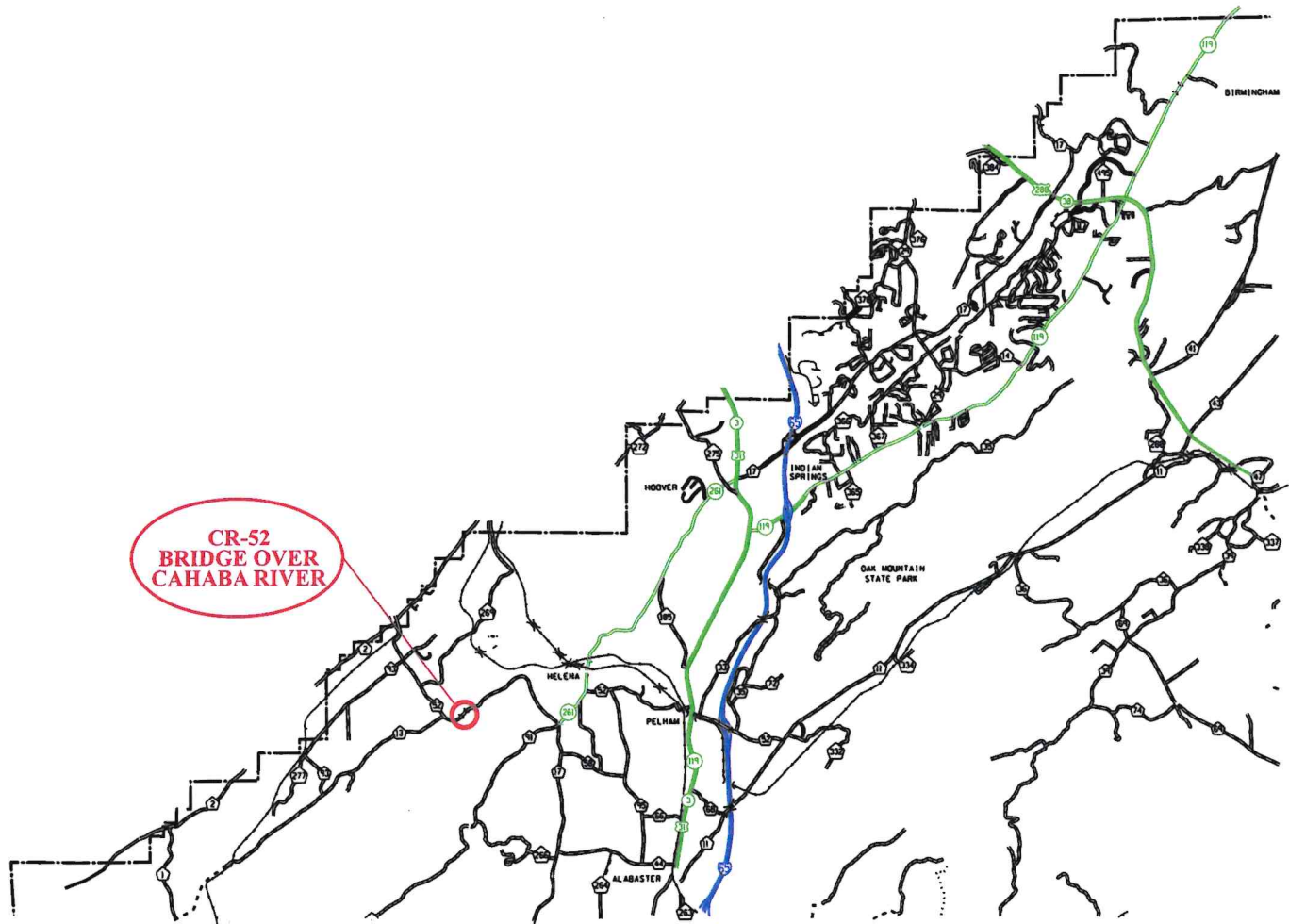
SCP 59-952-24

2026

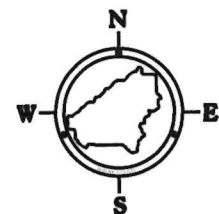
1A

# PROJECT LOCATION

## PLANS OF PROPOSED PROJECT SCP 59-952-24



COUNTY LOCATOR



NOT TO SCALE

**LEGEND**

INTERSTATE HIGHWAY  
U.S. & STATE HIGHWAYS  
GRADED & DRAINED ROAD  
COUNTY PAVED ROAD  
RAILROAD



REFERENCE PROJECT NO	FISCAL YEAR	SHEET NO
SCP 59-952-24	2026	1B

INDEX TO SHEETS  
PROJECT NO. SCP 59-952-24  
SHELBY COUNTY

SHEET NO. 1	TITLE SHEET
SHEET NO. 1A	PROJECT LOCATION
SHEET NO. 1B	INDEX TO SHEETS
SHEET NO. 2	PROJECT NOTES
SHEET NO. 2A-2B	TRAFFIC CONTROL NOTES
SHEET NO. 3	SUMMARY OF QUANTITIES
SHEET NO. 4-4A	TRAFFIC CONTROL PLANS

THE FOLLOWING IS A LIST OF STANDARD OR SPECIAL DRAWINGS CONTAINED IN THE  
ALABAMA DEPARTMENT OF TRANSPORTATION SPECIAL AND STANDARD HIGHWAY DRAWINGS  
BOOKLET DATED 2025 WHICH APPLY TO THIS PROJECT:

<u>INDEX NO.</u>	<u>DRAWING NO.</u>	<u>DESCRIPTION</u>
74007	TCD-100	DETAILS FOR TRAFFIC CHANNELIZATION DEVICES

REFERENCE PROJECT NO	FISCAL YEAR	SHEET NO
SCP 59-952-24	2026	2

**PROJECT NOTES**  
**PROJECT NO. SCP 59-952-24**  
**SHELBY COUNTY**

- 201: THE FULL LENGTH OF THE DECK SHALL BE SHOTBLASTED, SEALED, AND SANDED FROM CURB TO CURB
- 202: ALL TRAFFIC TAPE SHALL BE PROTECTED ACCORDING TO THE PROJECT SPECIFIC SPECIFICATION 22-PS0393-SC.
- 203: THE SAND SHALL MEET THE REQUIREMENTS OF THE SEALANT MANUFACTURER AND SECTION 802 OF THE ALABAMA STANDARD SPECIFICATIONS, 2026 EDITION.
- 204: THE COUNTY HAS SELECTED ECHEM EP75-SEAL FOR THE PROJECT. PRODUCT SHEETS AND CONTACT INFORMATION FOR THE SUPPLIER WILL BE PROVIDED UPON REQUEST. ALTERNATIVE SEALER MATERIALS SHALL MEET THE REQUIREMENTS OF THE PROJECT SPECIFIC SPECIFICATION 22-PS0393-SC
- 205: THE BRIDGE DECK IS GROOVED. BROOMS WILL BE REQUIRED TO REMOVED EXCESS EPOXY
- 206: ALL EQUIPMENT AND LIGHTING REQUIRED FOR THE SEALING OF THE BRIDGE DECK WILL BE A SUBIDARY OBLIGATION OF ITEM 505D-000 AND SHALL MEET THE REQUIREMENTS OF THE SEALANT MANUFACTURER
- 207: THE CONCRACTOR WILL BE ALLOWED TO CLOSE A SINGLE LANE BETWEEN THE HOURS OF 6PM AND 6AM IF PERMITTED BY WEATHER.
- 208: THE CONTRACTOR SHALL COORDINATE WITH THE COUNTY TO CONDUCT THE WORK DURING FAVORABLE WEATHER ACCORDING TO THE SEALANT MANUFACTURER'S RECOMMENDATIONS
- 209: THE CONTRACTOR SHALL COMPLETE THE ENTIRE PROJECT IN 5 WORKING DAYS.
- 210: THE BRIDGE PLANS ARE AVAILABLE UPON REQUEST. BRIDGE DETAIL SHEETS ARE AVAILABLE IN THE E-BID PORTAL

REFERENCE PROJECT NO	FISCAL YEAR	SHEET NO
SCP 59-952-24	2026	2A

**TRAFFIC CONTROL NOTES**  
**PROJECT NO. SCP 59-952-24**  
**SHELBY COUNTY**

700. THE TRAFFIC CONTROL PLAN IS DEVELOPED IN CONFORMANCE WITH THE MANUAL ON UNIFORM TRAFFIC CONTROL DEVICES PART 6, 11TH EDITION. THE TRAFFIC CONTROL DEVICES INDICATED REPRESENT CONDITIONS KNOWN DURING PLAN DEVELOPMENT. IN THE EVENT ACTUAL PHYSICAL CONDITIONS WARRANT ADDITIONAL TRAFFIC CONTROL DEVICES, THEY SHALL BE INSTALLED IN CONFORMANCE WITH THE MUTCD PART 6 AS DIRECTED BY THE ENGINEER. COST SHALL BE PAID FOR AS A SUBSIDIARY OBLIGATION.
701. THE CONTRACTOR WILL BE PERMITTED TO DEVELOP HIS OWN TRAFFIC CONTROL PLAN TO BE USED IN LIEU OF THIS TRAFFIC CONTROL PLAN IF APPROVED BY THE ENGINEER. A CONTRACTOR DEVELOPED TRAFFIC CONTROL PLAN SHALL BE A SUBSIDIARY COST OF THE CONTRACT.
702. THE CONTRACTOR SHALL ENSURE THAT ALL TRAFFIC CONTROL DEVICES ARE PLACED AS REQUIRED IN THE TRAFFIC CONTROL PLANS AND ARE IN SERVICEABLE CONDITION AT ALL TIMES.
703. ALL SIGNS AND BARRICADES MAY BE ADJUSTED BY THE ENGINEER FOR THE SAFETY OF THE TRAVELING PUBLIC WHEN NECESSARY.
704. ADDITIONAL SIGNS MAY BE REQUIRED IF DEEMED NECESSARY BY THE ENGINEER. ADDITIONAL ITEMS TO BE A SUBSIDIARY COST OF THE CONTRACT.
705. NO DIRECT PAYMENT WILL BE MADE FOR REMOVING, RELOCATING, OR COVERING OF IN PLACE SIGNS, BARRELS, BARRICADES, OR OTHER TRAFFIC CONTROL DEVICES AS REQUIRED IN THIS TRAFFIC CONTROL PLAN (SEE SPECIAL DRAWING NO. TCD-100 IN THE ALABAMA DEPARTMENT OF TRANSPORTATION'S SPECIAL AND STANDARD HIGHWAY DRAWINGS, 2024 EDITION). COST TO BE A SUBSIDIARY OBLIGATION OF THE CONTRACT.
706. THE QUANTITIES SHOWN ON THE TRAFFIC CONTROL PLAN SHEET ARE CONSIDERED TO BE THE MINIMUM REQUIREMENT FOR HANDLING TRAFFIC AT ANY GIVE TIME DURING CONSTRUCTION.
707. THE CONTRACTOR IS TO REMOVE, RELOCATE, OR COVER DURING CONSTRUCTION AND THEN RESET OR UNCOVER UPON COMPLETION OF A PARTICULAR SECTION ANY CONFLICTING IN-PLACE ROADWAY SIGNS AS DIRECTED BY THE ENGINEER. COST TO BE A SUBSIDIARY OBLIGATION OF THE CONTRACT.
708. ALL CONSTRUCTION SIGNS PLACED BEFORE WORK BEGINS SHALL BE COVERED WITH BLACK PLASTIC OR SOME OTHER SUITABLE MATERIAL SO THAT THE SIGNS ARE NOT VISIBLE UNTIL WORK IS IN PROGRESS.
709. ALL BLACK ON ORANGE CONSTRUCTION SIGNS SHALL BE FABRICATED USING TYPES IV OR VIII FLUORESCENT ORANGE REFLECTIVE SHEETING MATERIAL FOR THE SIGN BACKGROUND.
710. DURING NON-WORKING HOURS NO EQUIPMENT OR MATERIAL SHALL BE PARKED OR STORED CLOSER THAN 30 FEET TO THE EDGE OF ANY ROADWAY CARRYING TRAFFIC. WHEN THIS IS NOT PRACTICAL, IT SHALL BE PLACED IN AN AREA APPROVED BY THE ENGINEER AND DELINEATED BY REFLECTORIZED DRUMS. THIS INCLUDES STORAGE OF TRAFFIC CONTROL DEVICES SUCH AS TRAILER MOUNTED OR OTHER TEMPORARY SIGNS, BARRICADES, DRUMS, ETC., WHICH ARE NOT IN USE DURING NON-WORKING HOURS. THESE ARE TO BE FURNISHED BY THE CONTRACTOR WITHOUT COST TO SHELBY COUNTY.

REFERENCE PROJECT NO	FISCAL YEAR	SHEET NO
SCP 59-952-24	2026	2B

**TRAFFIC CONTROL NOTES**  
**PROJECT NO. SCP 59-952-24**  
**SHELBY COUNTY**

- 712. WHERE THE LOCATION OF A REQUIRED SIGN FALLS IN A DRIVEWAY, SIDEWALK, BRIDGE, ETC., OR WHERE THE VISIBILITY OF A SIGN IS LIMITED TO THE TRAVELING PUBLIC, THE LOCATION SHALL BE ADJUSTED AS DIRECTED BY THE ENGINEER.
- 713. THE CONTRACTOR SHALL PLACE ALL ADVANCE WARNING SIGNS BEFORE PROCEEDING WITH THIS WORK.
- 714. ALL VEHICLES, EQUIPMENT, PERSONNEL (EXCEPT FLAGGERS), AND THEIR ACTIVITIES, ARE RESTRICTED AT ALL TIMES TO ONE SIDE OF THE PAVEMENT UNLESS OTHERWISE AUTHORIZED BY THE ENGINEER.
- 715. CONTRACTOR SHALL MAINTAIN AT LEAST ONE ACCESS TO BUSINESSES AND RESIDENCES DURING ALL PHASES OF CONSTRUCTION.
- 716. CONSTRUCTION SIGNS MOUNTED ON TEMPORARY SUPPORTS SHALL BE MOUNTED AT A MINIMUM HEIGHT OF 5 FEET.
- 717. FLAGGERS SHALL BE PROPERLY ATTIRED, EQUIPPED WITH STAFF MOUNTED STOP/SLOW PADDLES IN SIGHT OF EACH OTHER OR HAVE DIRECT COMMUNICATION AT ALL TIMES. FLAGGER STATION LOCATION MAY BE VARIED FROM THOSE SHOWN BASED ON ROADWAY CONDITIONS AT THE TIME OF THE LANE CLOSURE.
- 718. FLAGGERS ARE TO BE USED WHEN DIRECTED BY THE ENGINEER. SIGNS SHALL BE PLACED AT THE APPROPRIATE TIME AND SHALL BE COVERED OR REMOVED WHEN FLAGGERS ARE NOT ON DUTY AND DURING NON-WORKING HOURS.
- 719. TEMPORARY LIGHTING SHALL BE PROVIDED AT ALL FLAGGER STATIONS USED DURING NIGHTTIME WORK ACCORDING TO THE MUTCD SECTION 6N.18(06-07)
- 720. THE CONTRACTOR SHALL NOTIFY THE ENGINEER A MINIMUM OF 72 HOURS PRIOR TO BEGINNING WORK. THE COUNTY ENGINEER MAY DEPLOY CHANGEABLE MESSAGE SIGNS TO INFORM THE PUBLIC.

REFERENCE PROJECT NO	FISCAL YEAR	SHEET NO
SCP 59-952-24	2026	3

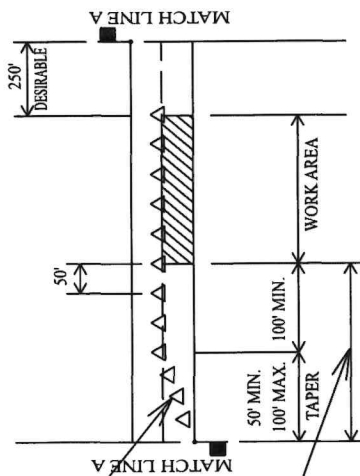
SUMMARY OF QUANTITIES			
Pay Item	UNIT	QUANTITY	DESCRIPTION
505D-000	SY	1,982	APPLICATION OF BRIDGE DECK SEALANT
740B-000	SF	96	CONSTRUCTION SIGNS
740E-000	EACH	40	CONES (36" HIGH)
740K-001	EACH	2	TEMPORARY AREA LIGHTING

REQUIRED CONSTRUCTION SIGNS - 740B-000			
SIGN	DESIGNATION	QUANTITY	DIMINSIONS (IN.)
ROAD WORK AHEAD	W20-1	2	48 X 48
ONE LANE ROAD AHEAD	W20-4	2	48 X 48
FLAGGER (SYMBOL)	W20-7	2	48 X 48

# TRAFFIC CONTROL PLAN SHEET

TWO LANE HIGHWAY, ONE LANE CLOSURE

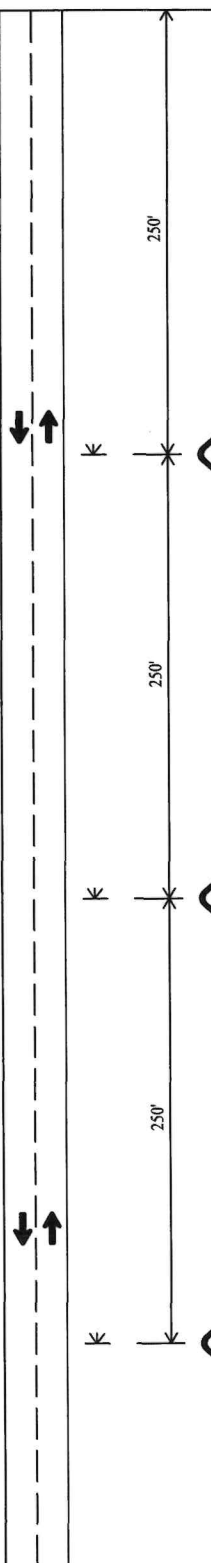
TEMPORARY LIGHTING SHALL BE PROVIDED AT ALL FLAGGER STATIONS USED DURING NIGHTTIME WORK  
ACCORDING TO THE MUTCD SECTION 6N.18(06-07)



TAPER SHALL BE FORMED BY PLACING ONE CONE PER FOOT OF LANE WIDTH.

SEE TABLE 6E-1 OF THE MUTCD PART 6 FOR DISTANCE OF FLAGGER STATION IN ADVANCE OF WORK SPACE

MATCH LINE A



W20-7



W20-4



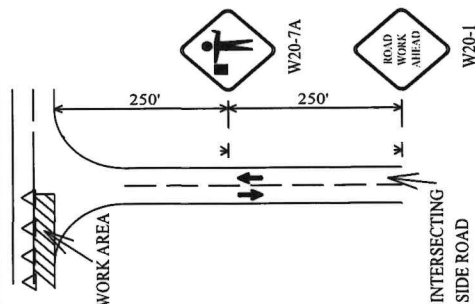
W20-1

REQUIRED SIGN SIZES	
W20-1	48" X 48"
W20-4	48" X 48"
W20-7	48" X 48"

## LEGEND

- TEMPORARY MOUNTED SIGN
- POST MOUNTED SIGN
- CONE WITH BALAST
- FLAGGER

## TRAFFIC CONTROL FOR INTERSECTING SIDE ROADS WITHIN WORK AREA



NOTE: THE W20-1 AND W20-7A SIGNS TO BE USED ON INTERSECTING ROADS SHALL BE 36"X36" IN SIZE. THE TEMPORARY MOUNTED W20-1 ROAD WORK AHEAD SIGN SHOWN ON THE SIDE ROAD WILL NOT BE REQUIRED IF ONE IS ALREADY POST MOUNTED ON THE SIDE STREET.

DESIGN BUREAU SPECIAL DRAWING  
DETAILS FOR TRAFFIC CONTROL FOR  
FLAGGING ON TWO LANE HIGHWAYS

DRAWN BY:	SPECIAL PROJECT DETAIL	ROUTE	VARIOUS
DATE DRAWN:	SHEET TITLE		

NOT TO SCALE

REFERENCE PROJECT NO

SCP 59-952-24

FISCAL YEAR

2026

SHEET NO

4



# TEMPORARY TRAFFIC CONTROL PLAN SHEET

REFERENCE PROJECT NO

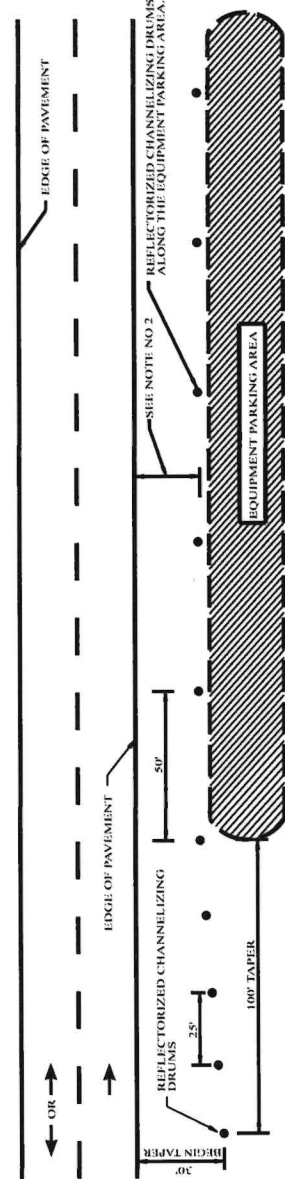
SCP 59-952-24

FISCAL YEAR

2026

SHEET NO

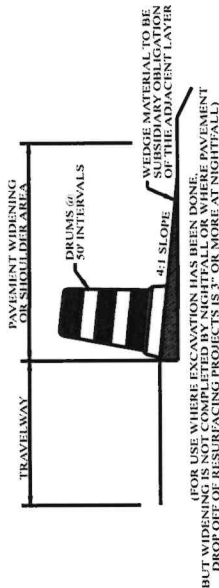
4A



## NOTES:

1. SEE GENERAL TRAFFIC CONTROL PLAN NOTE NO. 711.
2. DRUMS TO BE AS FAR AS PRACTICAL FROM EDGE OF PAVEMENT. MINIMUM DESIRABLE DISTANCE IS 15 FEET FOR FREEWAY TYPE PROJECTS AND 10 FEET FOR OTHER TYPES. DRUMS SHALL BE PLACED IN SUCH A MANNER AS TO PROVIDE MAXIMUM AVAILABLE SPACE. DIMENSIONS LESS THAN DESIRABLE SHALL BE AS DIRECTED BY THE ENGINEER.
3. ALL DEVICES TO BE FURNISHED BY THE CONTRACTOR WITHOUT COST TO THIS COUNTY.

## DELINEATING DETAIL FOR EQUIPMENT PARKING OR STORING AREA

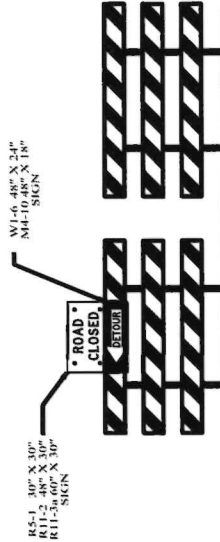


(FOR USE WHERE EXCAVATION HAS BEEN DONE, BUT WIDENING IS NOT COMPLETED BY NIGHTFALL OR WHERE PAVEMENT DROP OFF OF RESURFACING PROJECTS IS 3' OR MORE AT NIGHTFALL)

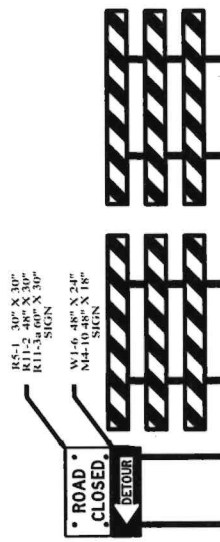
## TYPICAL FOR DROP-OFF AT EDGE OF PAVEMENT

NOTE: CONTRACTOR IS TO CONSTRUCT A WEDGE OF UNCLASSIFIED EXCAVATION OR CRUSHED AGGREGATE BASE. THE COST OF PLACING AND REMOVAL SHALL BE A SUBSIDIARY OBLIGATION OF THE ADJACENT LAYER.

CHANNELIZING DRUMS SHALL BE PLACED AT 50 FT INTERVALS.



## DETAILS FOR TYPICAL PLACEMENT OF TYPE III BARRICADES OUTSIDE OF CLEAR ZONE



## DETAILS FOR TYPICAL PLACEMENT OF TYPE III BARRICADES INSIDE OF CLEAR ZONE

## NOTES

1. SLOPE OF STRIPES ON BARRICADES SHALL BE IN ACCORDANCE WITH SECTION 607.68 OF THE MUTCD AND DRAWING B-107-2.
2. IF SIGNS ARE REQUIRED TO BE USED IN CONJUNCTION WITH TYPE III BARRICADES TO BE PLACED INSIDE THE CLEAR ZONE, THEY SHALL BE POST MOUNTED TO THE SIDE OF THE BARRICADES AS SHOWN.
3. IF ROAD CLOSED OR DETOUR SIGNS ARE REQUIRED TO BE USED WITH TYPE III BARRICADES TO BE PLACED OUTSIDE THE CLEAR ZONE, THEY SHALL BE PLACED ON THE TOP OF THE BARRICADES NEAREST THE DETOUR.

ALABAMA DEPARTMENT OF TRANSPORTATION 1000 CATALINA DRIVE, SUITE 111, MOBILE, AL 36688-1111 (205) 944-1000 FAX (205) 944-1001		PROJECT NO. _____ SHEET NO. _____ SPECIAL PROJECT DETAIL	
NOT TO SCALE REVISIONS: _____ STANDARD DETAILS FOR TRAFFIC CONTROL PLANS		2001	

# EP75-SEALANT

# EP75-SEAL

LOW-VISCOSITY, LOW SURFACE TENSION,  
PENETRATING HEALER/SEALER

## PROLONGS THE LIFE OF CONCRETE BY SEALING CRACKS AGAINST MOISTURE AND CHLORIDE ION INTRUSION

**EP75-SEAL** is a highly penetrating, low-viscosity, two-component epoxy urethane healer/sealer offering longer life cycles than traditional epoxy polymer sealers. **EP75-SEAL** is designed to prolong the life of concrete by sealing cracks against moisture and chloride ion intrusion, with a rapid cure time that allows traffic to re-open quickly.

### Features & Advantages

Excellent bond strength	Low viscosity
Moisture insensitive	Epoxy urethane technology
High early strength	Color coded for ease of mixing
Easy to mix - 1:1 ratio	Designed for hand mix or mechanical applications
Low modulus	

**echem**

A Meridian Adhesives Group Company

4102 El Rey Rd SE • Albuquerque, NM 87105  
(505) 832-3667 • e-chem.net

**EP75-SEAL** is available in 2, 10, 110, and 500 gallon kits.



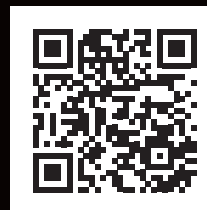
Tined: 1 gallon/60-80 ft<sup>2</sup>  
Smooth: 1 gallon/80-150 ft<sup>2</sup>



(\$2.25 per yd<sup>2</sup>)



(40 cps - ASTM D2393)



EP75-SEAL  
Product Information

**LOW-VISCOSITY, LOW SURFACE TENSION, PENETRATING HEALER/SEALER****PHYSICAL PROPERTIES**

Laboratory Tests	Results
C-881 Viscosity	<40 cps
C-881 Gel Time	50-70 Minutes
C-884 Thermal Compatibility	Pass
D-2240 Shore D Hardness*	68-74
D-570 Absorption*	0.25%
C-882 Bond Strength (2 day cure)	1,500 psi
C-882 Bond Strength (14 day cure)	2,200 psi
C-883 Shrinkage	Pass
D-695 Compressive Modulus*	80,000-120,000 psi
C-695 Compressive Strength*	5,000-5,500 psi
D-2566 Linear Coefficient of Shrinkage*	0.0021
D-638 Tensile Strength*	3,000-3,200 psi
D-638 Tensile Elongation*	35-45%
D-790 Flexural Strength*	3,000-5,000 psi
Percent Solids	75%
VOC Content	<250 g/L
ACI 503R Adhesion to Concrete	>500 psi (concrete failure)
Flash Point	>170F
Specific Gravity	1.04

## LOW-VISCOSITY, LOW SURFACE TENSION, PENETRATING HEALER/SEALER

### DESCRIPTION

EP75-SEAL is a highly penetrating, two-component epoxy healer/sealer. Its rapid cure time allows traffic to re-open in less than six hours.

### APPLICATIONS

EP75-SEAL is designed to prolong the life of concrete by sealing cracks against moisture and chloride ion intrusion. Specific applications include:

- Bridge decks
- Parking decks
- Concrete floors
- Roadways
- Airport runways/taxiways
- Columns & beams in splash zones
- Consolidation of porous & dusting surfaces

### ADVANTAGES

- Excellent bond strength
- Moisture insensitive
- High early strength
- Easy to mix - 1:1 ratio
- Low modulus
- Low viscosity
- Epoxy urethane technology
- Color coded for ease of mixing

### COMPLIANCES

- VOC compliant, <250 g/L
- Made in America

### PACKAGING

2-gallon unit

- Component A: (1) 1-gallon can
- Component B: (1) 1-gallon can

10-gallon unit

- Component A: (1) 5-gallon pail
- Component B: (1) 5-gallon pail

110-gallon unit

- Component A: (1) 55-gallon drum
- Component B: (1) 55-gallon drum

500-gallon unit

- Component A: (1) 250-gallon tote
- Component B: (1) 250-gallon tote

**Appearance of Components:** A - Blue, B - Light Amber

**Shelf Life:** 2 years in original unopened container

**Storage:** 50°F to 95°F in dry and dark conditions

**Temperature Considerations: IMPORTANT!** Epoxy Resins are temperature sensitive and care should be taken to condition all components to between 60°F to 85°F for a minimum of 24 hrs. prior to mixing and placement. Temperatures colder than stated range increase viscosity of resins and inhibit mixing and flow of materials. Temperatures warmer than stated range decrease viscosity of resins, hasten the cure and reduce the working time. Mixing and curing at less than ideal temperatures, <60°F or >95°F, will require special considerations.

11/20/2017

### COVERAGE

Minimum Coverage Rates:

	Epoxy	Aggregate (#12/20)
Tined	1 gallon/60-80 sq. ft.	4-8 lbs./sq. yd.
Smooth	1 gallon/80-150 sq. ft.	4-8 lbs./sq. yd.

### CURE TIME

Use the table below to determine minimum cure times based on the temperature of the materials and the substrate.

	Average Temperature of Materials & Substrate (°F)					
Cure Temp	60-64	65-69	70-74	75-79	80-84	85+
Cure Time	8 hrs	6.5 hrs	5 hrs	3.5 hrs	3 hrs	2.5 hrs

\*Set times are merely averages, site conditions will dictate actual cure response for open to traffic time.

### INSTALLATION

Flood-Coat Sealing Concrete Surfaces

**Surface Preparation:** Clean surface by shot-blasting or sandblasting to remove all contaminants and open surface and cracks. Remove dust and debris by blowing off with oil-free compressed air.

**Mixing:** Mechanically mix Component A with Component B 1:1 by volume with Jiffy type mixer and low-speed variable drill at 300 rpm for a minimum of 3 minutes. Mix only the quantity that can be used within its gel time. BULK: For bulk mixing, a positive displacement pump, incorporating a static mixing wand and meter, is recommended.

**Placement:** Apply neat EP75-SEAL by pouring or spraying on the surface. Distribute material evenly with a squeegee, roller or broom, maintaining a liquid head over cracks until refusal. Remove all excess material with squeegee or broom. Broadcast select aggregate to properly cover liquid resin. The aggregate should be moisture free and free of dirt, clay, etc. After initial cure of first course, remove excess aggregate.

When used as primer or pre-treatment prior to overlay, consult E-Chem representative.

### LIMITATIONS

- For professional use only
- Do not thin with solvents
- Compressed air equipment must have an oil/air separator.
- Minimum age of concrete must be 28 days before applying as an overlay.
- Substrate temperature should be a minimum of 50°F and rising
- When installation and cure temperatures are expected below 60°F, consult E-Chem representative.
- Maximum of one flood coat application
- EP75-SEAL is a vapor barrier after curing.
- Consult E-Chem representative when mixing or placing outside of the temperature recommendations listed.

## LOW-VISCOSITY, LOW SURFACE TENSION, PENETRATING HEALER/SEALER

**CLEAN UP**

**EQUIPMENT:** Uncured material can be removed with C-Clean100 or approved solvent. Cured material can only be removed mechanically.

**MATERIAL:** Collect with absorbent material. Flush area with water. Dispose of in accordance with local, state and federal disposal regulations.

**CAUTIONS****READ SDS PRIOR TO USING PRODUCT!**

- Component A: Irritant
- Component B: Corrosive
- Product is a strong sensitizer. Use of safety goggles and chemical resistant gloves are recommended.
- Use in well-ventilated area and avoid breathing vapors
- Use of a NIOSH/MSHA organic vapor respirator is recommended if ventilation is inadequate.
- Avoid overspray or mist conditions when applied by sprayer
- Avoid skin contact
- Keep away from heat and flames

**FIRST AID**

**EYE CONTACT:** Flush immediately with water for at least 15 minutes. Contact physician immediately.

**RESPIRATORY CONTACT:** Remove person to fresh air.

**SKIN CONTACT:** Remove any contaminated clothing.

Remove epoxy immediately with a dry cloth or paper towel. Solvents should not be used as they carry the irritant into the skin. Wash skin thoroughly with soap and water.

**IF INGESTED:** Do not induce vomiting. If swallowed give water to drink. Seek medical treatment immediately.

**GENERAL:** Remove contaminated soaked clothing immediately. In the event of persistent symptoms receive medical treatment.

**CURED EPOXY RESINS ARE INNOCUOUS.**

**WARRANTY**

This product is warranted and guaranteed to be of good quality. Manufacturer, as its sole and exclusive liability hereunder, will replace material if proved defective. This warranty and guarantee are expressly in lieu of all others, express or implied, including any implied warranty of merchantability or fitness for a particular purpose and may not be extended by representatives or any persons, written sales information, or drawing in any manner whatsoever. While the manufacturer recommends uses for the product based on tests believed reliable, no warranties, express or implied, or guarantees can be given as to particular methods of use or application, nor can performance be warranted, expressly or impliedly, or guaranteed under special conditions. Distributors, salespersons or company representatives are not authorized to extend or vary any warranties or guarantees beyond those outlined herein, nor may the manufacturer's or seller's limitation of liability be waived or altered in any manner whatsoever.